

A Message From The President

Most of you have now have been introduced to Inspire Health Partners and have seen the way in which we will interact with your benefit plans for 2015 and beyond. But just being part of your benefit plan is not what this initiative is all about; it is about creating a medical care delivery system that is recognized as one of the highest quality systems in the country. This initiative is being developed and run by physicians in Bartholomew and Jackson counties to address the very real issues of a rapidly changing health care delivery landscape.

Today's consumer is looking for something different and is in fact engaging different ways to receive healthcare. Look at the proliferation of employer clinics, minute clinics and now Walmart's entry into the health care delivery arena. The patient is demanding a better patient experience, faster access and better coordination of care. Payment for services provided by physicians and hospitals continues to be cut and the way healthcare is delivered now is at odds with the cost reduction that the employers, government and consumers are looking for. And overarching all of this is a need to use data to keep all those we serve healthy and to have the best outcomes from the care we provide.

Our committees, led by physicians, are hard at work on behalf of all Inspire care providers to accomplish many things to be ready for January 1, when Inspire's services begins for employees of Schneck Medical Center, Columbus Regional Hospital and SIHO. The Membership and Credentialing committee is making sure that Inspire Health Partners offers a high performing network of providers, locally and beyond. Our Quality and Primary Care committees are developing a Patient Centered Medical Home model to support better coordination of care and the consistent use of data to drive better clinical care. In our IT committee we are making decisions on how to get the most accurate and useful data in the hands of the right people at the right time to give our patients the care they need and expect. And we are creating multiple ways to introduce Inspire Health Partners.



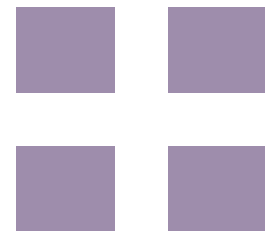
Marc Rothbart, President
mrothbart@inspirehealthpartners.com
(812) 343-4798
(812) 376-5444 (812) 524-4204

Mission Statement

To be the best community-based health care system

Vision Statement

To be the premier community-based, clinically integrated healthcare network through collaborative partnerships among physicians, hospitals and local industry

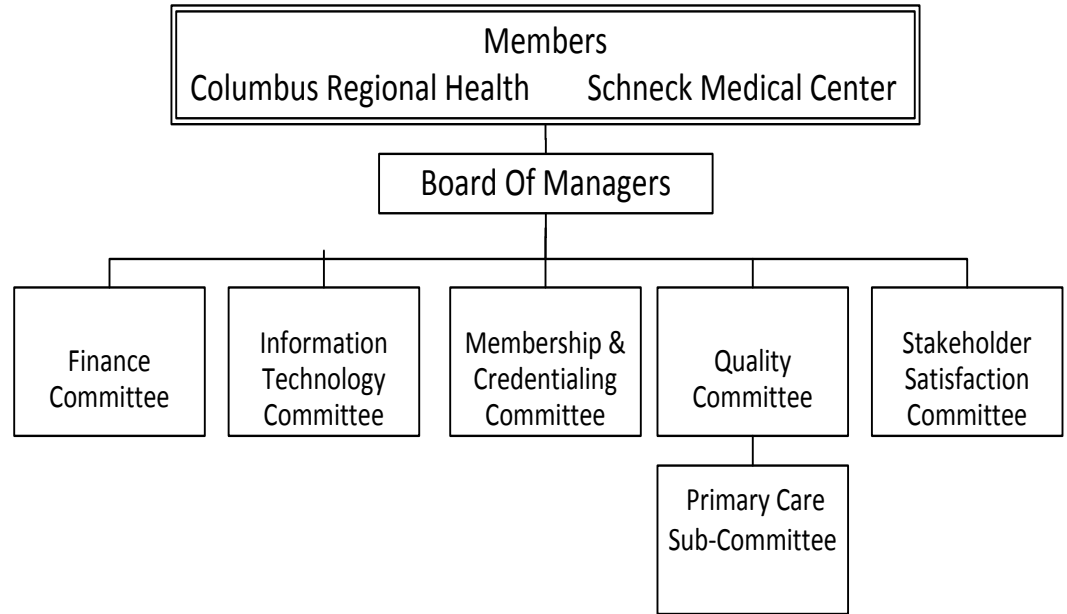


The Inspire Organization—Moving Forward Together

What do the letters
represent in the
word



I N Indiana & integration
S service
P patient centered
I innovation
R results
E excellence



Board Of Managers Includes Community Stakeholders

Chair

Eric Fish, MD
Schneck OB-GYN

Vice-Chair

Michael Dorenbusch, MD
Southern Indiana Surgery

Secretary

Jim Bickel, President & CEO
Columbus Regional Health

Treasurer

Gary Meyer, President & CEO
Schneck Medical Center

Member

Amanda Dornfeld, MD
Sandcrest Family Medicine

Member

Michael Dornhecker, Vice President
Kremer Urban Pharmaceuticals, Inc.

Member

Bruce Nolting, Vice President
Toyota Industrial Equipment Mfg. Inc.

Member

Douglas Towriss, MD
Schneck Hospital Medical Associates

Non-voting Member

Kurt Ellis, Vice President
Columbus Regional Health

Non-voting Member

Warren Forgey, EVP & COO
Schneck Medical Center

Non-voting Member

Marlene Weatherwax, VP & CFO
Columbus Regional Health

HEALTHCARE IDEALS AT WORK

** Chair
* Vice Chair

- Finance Committee**
- ◆ Product offering
 - ◆ Annual budget
 - ◆ Network flow of funds

Members
Debbie Ridlen, SMC **
Marlene Weatherwax, CRH **
Michael Conway, MD
Kathy Covert, SMC
Michael Dorenbusch, MD
Kurt Ellis, CRH
Christopher Iorio, MD
Rolf Loescher, MD
John Loya, CRH
David Stout, MD
Melinda Hunnicutt, MD
R. Andrew Robertson, MD

- Quality Committee**
- ◆ Metric selection
 - Universal
 - Primary Care
 - Specialty
 - ◆ Benchmarks
 - ◆ Performance targets

Members
Douglas Towriss, MD**
Thomas Sonderman, MD*
D. Robert Baker, MD
Kathy Brock, CRH
Randall Brown, MD
Amanda Dornfeld, MD
Donna Darcy, MD
Tammy Dye, SMC
Eric Fish, MD
Tyrone Manalac, MD
Andrea Mernitz, MD
Frank Pangallo, MD
Pamela Robertson, MD
Kenneth Scott, MD
Pamela Snook-Tidd, MD
Kevin Terrell, DO
Susan Zabor, SMC

- IT Committee**
- ◆ IT strategy
 - ◆ Phytel implementation
 - ◆ Reporting packages
 - Quality measures

Members
Slade Crowder, MD**
Craig Rice, SMC*
Diana Boyer, CRH
Steve Champion, MD
Warren Forgey, SMC
David Hartung, DO
Ron Latta, CRH
Ilya Schwartzman, MD

- Primary Care Quality Sub-Committee**
- ◆ PCMH model creation
 - ◆ PCMH implementation

Members
Slade Crowder, MD
Tammy Dye, SMC
Kurt Ellis, CRH
David Hartung, DO
William Lustig, MD
John Montgomery, MD
Bradley Morin, MD
Derek Oldham, MD
David Rau, MD
Thomas Sonderman, MD
Douglas Towriss, MD
Nicholas Lemming, MD

- Membership & Credentialing Committee**
- ◆ Membership criteria
 - ◆ Participation oversight
 - ◆ Provider contracting
 - Primary, secondary, tertiary, quaternary

Members
John Fye, MD**
Alan Watanabe, MD*
Gina Bane, SMC
Tammy Dye, SMC
Kurt Ellis, CRH
Michael Kilpatrick, MD
David Rau, MD
David Thompson, MD

- Stakeholder Satisfaction Committee**
- The committee to be activated in 2015
- ◆ Stakeholder engagement
 - ◆ Network communication

Members
(To be activated in 2015)

Kathy Covert, SMC
James Davis, MD
Warren Forgey, SMC
Stephanie Furlow, SMC
Denise Glesing, CRH
Cheryl Harris, MD
David Hartung, DO
John Loya, CRH
Nicholas Lemming, MD
Gretchen Rose, SMC
Joseph Sheehy, MD
Shery Tiemeyer, SMC